

Creating an Observatory for Raising Social Awareness
on EU Social Inclusion Policy in the South-West
Region of Romania

Workshop

- Poverty and unemployment in Oltenia -



**The project is financed by the EU, DGEmployment & Social Affairs,
VP2004/04/05, grant 10112**

PARTNERSHIP

1. The University of Craiova - coordinator;
2. The Ministry of Health - Department for Public Health, Dolj;
3. The National House for Health Insurance - Department Dolj;
4. the Ministry of European Integration, Regional Development Agency South-West Oltenia;
5. The Ministry of Agriculture, Forestry and Rural Development, Sapard - Regional Branch Dolj;
6. The Ministry of Labour, Social Solidarity and Family, National Agency for Employment, Regional Branch of Oltenia;
7. The City Hall of Craiova;
8. The Government of Romania, Dolj Prefecture;
9. The Ministry of Labour, Social Solidarity and Family, The Direction for Dialogue, Family and Social Solidarity;
10. Oltenia TV Broadcasting Station - joined with RDS & Terra Sat;
11. Real Inter-Press Media Agency;
12. The Archdiocese of Craiova (Metropolis of Oltenia);
13. Craiova Youth Penitentiary;
14. The Regional Body for Pensions and Social Insurance Rights;
15. The Regional Centre for Professional Guidance and Reconversion.

CONTENTS

SITUATION OF THE LABOUR MARKET	7
THE POPULATION	23
THE WORKFORCE	66

1. SITUATION OF THE LABOUR MARKET

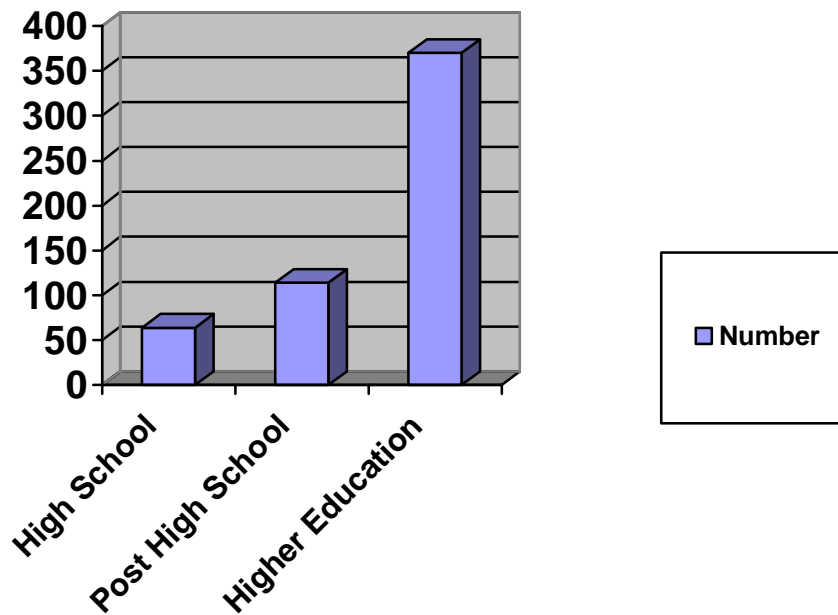
1.1. The stimulation of workforce mobility

In accordance with Article no 74 of the Law no 76/2002 the persons - who during the period in which they benefit from an unemployment indemnity are located, according to the law, in a town situated more than 50 km away from their place of residence,- benefit from a tax-free bonus of appointment, equal to two national minimum brut wages in force at the date at which it is granted. During 2004 a number of 70 persons were comprised in this category according to the law.

According to Article no 75 of the Law no 76/2002 the persons who during the period in which they benefit from an unemployment indemnity are located, according to the law, in another town and as a result of this, change their place of residence, are granted a bonus to settle down equal to 7 national minimum brut wages in force at the date at which it is granted. During 2004 a number of 67 persons were comprised in this category according to the law.

As far as the employment of graduates from educational institutions is concerned, by subventioning workplaces according to article no 80 of the Law no 76/2002, 548 graduates were employed in 2004, of which:

- 64 lower high school and vocational art school graduates;
- 114 higher secondary school or post high school graduates;
- 370 higher education graduates.



Employment of Graduates according to Law 76/2002

According to article no 85 of the Law no 76/2002 the employers who employ on an undetermined period unemployed people over 45 years old or unemployed people who are the only to provide for their entire family receive, during each month, an amount of money equal to the national brut minimum wage for at least 2 years. In 2004 729 were comprised in this category, of which 481 were unemployed people over 45 years old and 248 unemployed people who are the only to provide for their family.

In order to create new workplaces by setting up or developing small and medium enterprises, co-operative societies, family associations, as well as independent activities carried on by physically authorized persons in 2004 there have been granted, from the unemployment insurance budget, loans as a result of which 289 people were employed of which 86 persons had been unemployed before.

According to Law no 116/ 2002, 126 persons were hired in 2004 after signing solidarity agreements/contracts.

In 2004 year 953 persons were temporarily employed in public interest works. In 2004, 269 persons were employed for a period of minimum 6 months, by temporary workforce occupation in public interest works.

According to Law no 116/2002 126 persons were hired by signing solidarity agreements in 2004.

In 2004 the Agency of Workforce Occupation in Dolj county organized qualification and initiation courses attended by 804 persons, of which only 440 persons graduated. 193 persons were hired after graduating these qualification courses.

The annual organization of workplace grants represents one of the active measures that AWO Dolj consistently promotes in order to increase the degree of workplace occupation available at a county level.

On March, the 5th, 2004 the Women Workplace Grant was held. The statistical situation read as follows:

- 212 economic agents were visited in order to find out about vacant workplaces;
- 828 workplace offers available for persons in search of a workplace;
- 34 economic agents participating in the event;
- 1,130 persons participating in the action;
- 185 persons who found a workplace corresponding to their professional formation and received the status of occupied persons;
- 22.3% satisfaction degree of the workplace offer.

On April, the 2nd, 2004 the General Workplace Grant was held. The situation reads as follows:

- 214 economic agents were visited in order to find out about vacant workplaces;
- 1,025 workplace offers available for persons in search of a workplace;
- 46 economic agents participating in the event;
- 1,350 persons in search of a workplace participated in this action;

- 206 persons found a workplace corresponding to their professional formation and received the status of occupied persons;
- 20.1% satisfaction degree of the workplace offer.

On May, the 7th, 2004 the Students' Workplace Grant was held, the situation reading as follows:

- 151 economic agents were visited in order to find out about vacant workplaces;
- 352 workplace offers available for persons in search of a workplace;
- 17 economic agents participating in the event;
- 750 students participating in this action;
- 182 students selected in view of workplace occupation;
- 57 students were hired.

On May, the 24th, 2004 the Workplace Grant was organized for Roma persons, the situation reading as follows:

- 33 economic agents were contacted, of which 17 were Roma persons;
- 10 economic agents participating in the event, of which 2 were Roma persons;
- 166 workplace offers available for Roma persons in search of a workplace;
- 33 Roma persons participated in this event;
- 14 persons received the status of occupied persons.

On June, the 14th, 2004 within the framework of the Dolj Agency of workforce Occupation, the Workplace Grant for handicapped people was organized. The situation reads as follows:

- 76 economic agents were visited in order to find out about vacant workplaces for handicapped persons;
- 16 economic agents confirmed their participation;
- 180 workplace offers available for handicapped persons;
- 2 persons received the status of occupied persons.

On June, the 25th, 2004 the Workplace Grant for persons who are the only to provide for their entire family was organized, the situation reading as follows:

- 153 economic agents were visited in order to find out about vacant workplaces;
- 20 economic agents participating in the event;
- 699 workplace offers available for persons in search of a workplace;
- 162 persons participated in this action;
- 19 persons found a job.

On September, the 29th, 2004 the County Agency for Workforce Occupation organized the Graduates' Workplace Grant:

- 155 economic agents were visited in order to find out about vacant workplaces;
- 37 economic agents participating in the event;
- 1.073 workplace offers;
- 1.276 persons participated in the event;
- 131 graduates selected in view of workplace occupation;
- 55 graduates were hired.

On October, the 15th, 2004 the Workplace Grant for persons over 45 years old was organized, the situation reading as follows:

- 89 economic agents were contacted;
- 32 economic agents participating in the event;
- 468 workplace offers;
- 720 persons participated in the event;
- 29 persons were hired;
- 6.2% satisfaction degree of the workplace offer.

On October, 29th, 2004 the Virtual Workplace Grant was organized, the situation reading as follows:

- 104 persons participating in the event;

- 63 persons who benefit from mediation services;
- 32 issued repartitions.

The realisation of a relatively low satisfaction degree of the workplace offer was mainly determined by the following causes:

- miscorrelation of the structure on jobs of the workplace offer with the structure on jobs of the persons in search of a workplace;
- lack of appeal of some activity sectors such as the light industry and the personal and property insurances;
- nonmotivating wages offered by the hiring companies;
- unfavourable economic situation;
- systematic refusal manifested by Roma persons to occupy a workplace;
- The activity domains in which workplaces were offered didn't arouse any interest in handicapped persons, and that is why the persons who were selected subsequently refused the appointment to work.

1.2. Methodological explanations

The stable population of a locality on the 1st of July includes:

- Persons who on the 1st of July had their permanent residence in that specific locality, excepting the persons who on that date had a temporary residence in other localities;
- Persons who on the 1st of July had permanent residence in other localities, but who on that date had temporary residence in that specific locality;

Age is expressed by the age one has reached, how many years he/she is.

The data on localities are presented in accordance with the administrative and territorial division in force.

The definitions of the demographical events are in accordance with the recommendations of the United Nations Organization:

- **The new-born** is a product of conception, expelled of completely extracted from the mother's body, irrespective of the pregnancy duration and which, after this separation, presents a sign of life (respiration, cardiac activity, pulsations of the umbilical cord or muscular contractions depending on will);
- **The born dead** is a product of conception, expelled of completely extracted from the mother's body after a pregnancy duration of at least 28 weeks and who, after this separation, does not present any sign of life;
- **Deceased** is the person whose all vital sign definitively disappeared, at any moment after birth;
- **Marriage** represents the legal union of a man and woman as husband and wife, concluded in accordance with the country's laws, from which derive rights and obligations on behalf of the two spouses, as well as their rights and obligations towards their children;
- **The divorce** represents the legal dissolution of a marriage, by a definitive decision of the judicial organs;
- **The average life duration** represents the average number of years that a new born has to live, if he were to live all the rest of his life on terms of the mortality rates depending on ages from the reference period.

The presentation of data in territorial profile has been done on the following criteria:

- For new born and born dead- on the mother's residence;
- For the deceased- on the deceased person's residence (the mother's residence or the provider's residence – for the deceased under 1 year old);
- For marriage- on the place of marriage registration;
- For divorces- on the last common residence of the two spouses.

The birth rates, the mortality rates, the marriage rates and the divorce rates on a county level have been calculated on the basis of the legal population (with permanent residence).

The change of residence- establishing of residence in another locality (municipality, town or commune) and its registering in the personal ID documents by the police organs.

The data on residence changes do not include the changes of residence inside the same locality, from one street to another or from one village to another inside the same commune.

The number of emigrants represents the number of Romanian citizens who left the country for good.

1.3. The characterization of indicators

During the last century, the population evolution in Dolj county was influenced by the congruence of the economic, political and social factors. At present, we witness an accentuated demographic decline, a tendency of population decrease and an accentuation of the process of demographic ageing, with major long-term negative effects on the lasting development, work resources and the social security system for old people.

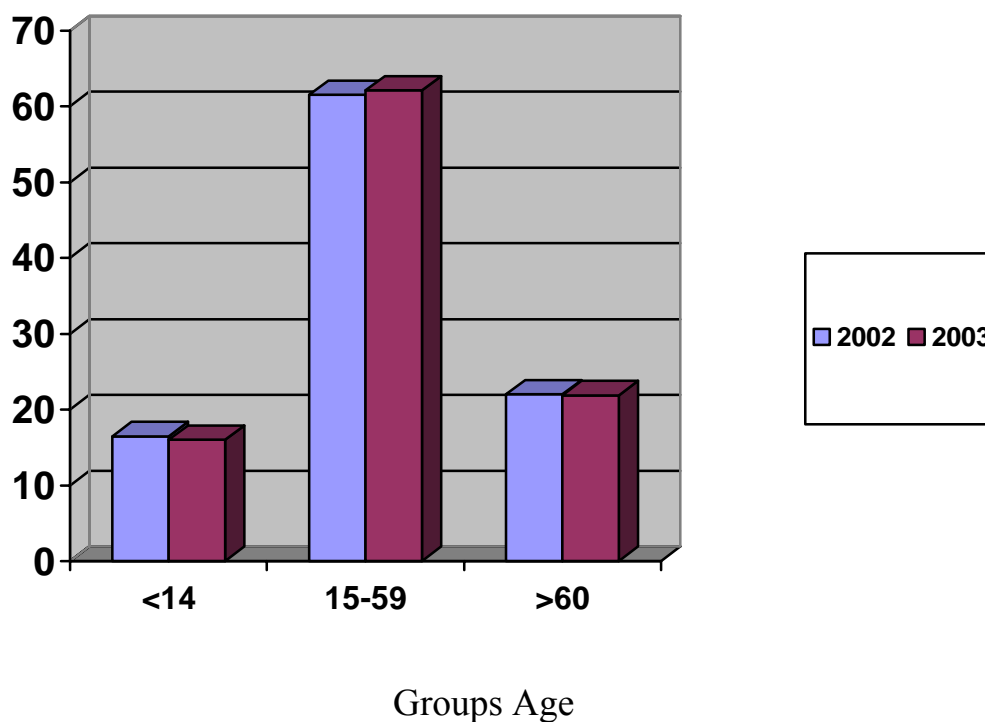
The population of Dolj county on the 1st of July 2003 was of 725,342 inhabitants, with 4,872 persons less than on the 1st of July 2002. The population density decreased to this interval from 98.5 inhabitants/square kilometres in 2002, to 97.8 inhabitants/square kilometres in 2003. The decrease of new-born babies, given the increase in the number of demises, has lead to a negative natural profit, from -4,283 persons in 2002 to -3,905 persons in 2003. compared to the data of the last census (March 2002) the county population decreased with 8,889 persons. As far as the distribution on the rural and urban

environment is concerned, of the total of the county population, 50.7% (368,080 persons) had a stable residence in municipalities and towns in 2003 (50.5% in 2002), and 49.3% (357,262 persons) in communes (49.5% in 2002).

The evolution of the demographic structure on gender and ages presents a significant importance, as well from the demographic point of view, as well as by the social and economic consequences it determines.

As a result of the combined action of several factors, the structure of the population on gender is characterized by a slight numeric prevalence of feminine population on total and for the age group 45 years old and over 45 years old (especially for advanced ages over 80 years old). In 2003, to 1,000 male persons there were 1,052 female persons.

The most significant mutations, with major social and economic consequences can be noticed in the population structure on ages, which reflects a continuous and accentuated process of demographic ageing, an irreversible process and a process typical of the European population.



The population structure on ages in Dolj county is the evidence of significant mutations which reflect a constant process of demographic ageing, determined by the increase in the number of adult and old population, simultaneously with the decrease in the number and proportion of young population. In the total population, the proportion of the population between 0-14 years old in 2003 was of 16.0% (as compared to 16.5% in 2002), that of the population between 15-59 years old of 62.1% (61.5% in 2002) and that of the population of 60 years old and over 60 years old of 21.9% (22.0% in 2002).

The demographic ageing is more accentuated in the urban environment due to the structure on ages of those who migrate from the rural area to the urban area. Almost a third (29.8%) of the rural population was made up in 2003 of old people of 60 years old and over 60 years old, their proportion being two times bigger than in the urban area.

The effects that the process of demographic ageing has on the progress of economic and social life, as well as on the perspective of demographic evolution, are also mirrored by the “ratio of demographic dependency” which represents the number of young and old persons to one adult person.

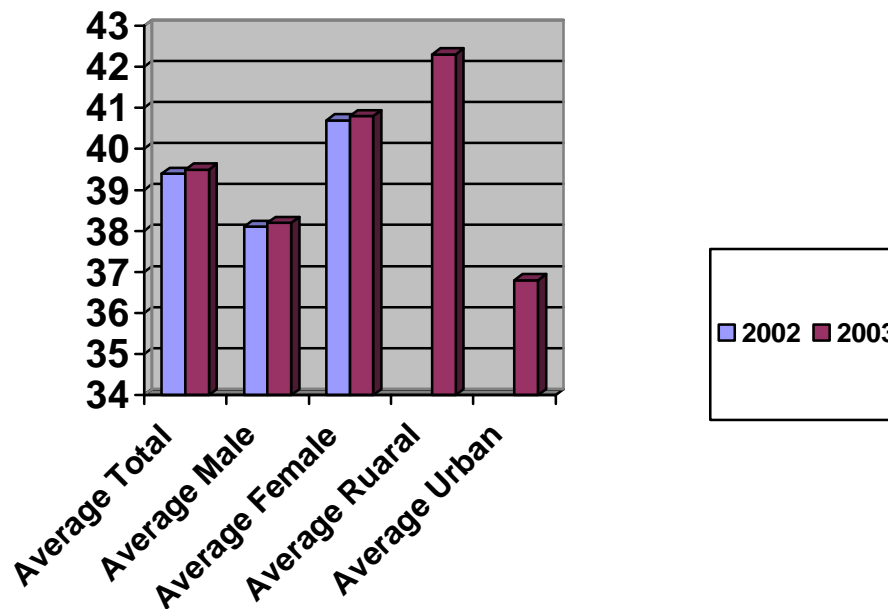
The dependency ratio determined for the young population decreased from 268 young people to 1,000 adult persons in 2002, from 258 young people to 1,000 adult persons in 2003, while this ratio determined for the old population (of over 60 years old) slightly decreased from 358 old persons to 1,000 adult persons in 2002, to 353 old persons to 1,000 adult persons in 2003.

The changes intervened in the population structure on ages also determined different evolutions of some population subgroups, with consequences on the social and economic activity.

The average population age in Dolj county increased insignificantly in 2003 as compared to 2002 (from 39.4 years old in 2002 to 39.5 years old in 2003). The average male population age – more reduced than the average

population age of the county – increased from 38.1 years old in 2002 to 38.2 years old in 2003, and the average female population age, in the same period, from 40.7 years old to 40.8 years old. The rural population, which is subject to a more accentuated demographic ageing has an average age of 42.3 years old in 2003, with 5.5 years more than the urban population (36.8 years old).

The more accentuated demographic ageing of the rural population is explained especially by the ageing of the female population, whose average age is of 44.1 years old in 2003, as compared to 40.4 years old-the average age of the male population.



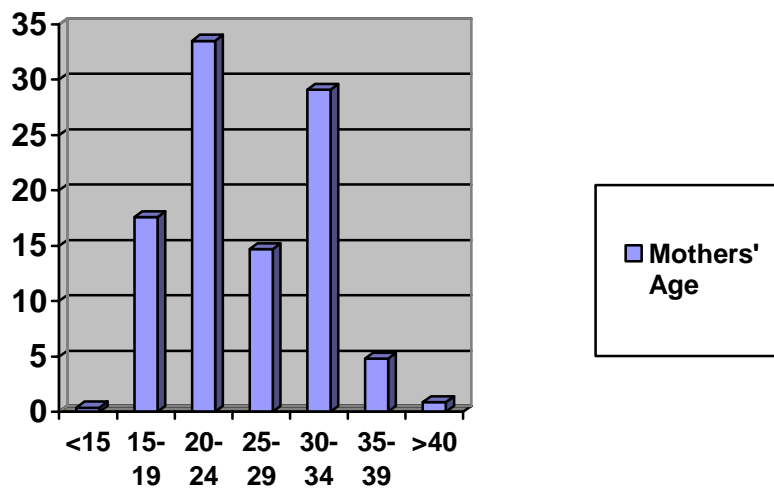
Average age

The evolution of **demographic phenomena** in 2003 as compared to 2002 was characterized by the increase of birth, marriage and divorce rates and the decrease of general mortality and infant mortality.

In 2003, the increase in the number of new-born and the decrease of deceased persons has led to the natural decrease of population as compared to 2002.

In 2003 the number of born live babies was of 6,510, with 63 more than in 2002. This led to a slight increase of the birth rate from 8.8 to 9.0 born live babies to 1,000 inhabitants. The negative evolution registered at the level of Dolj county was due to the decrease of the birth rate in both the urban and the rural environment (8.7‰ in the urban area and 9.3 ‰ in the rural area).

In the distribution of the born live babies on the mother's age group, in 2003 we have the following ratios: 0.4% for the group under 15 years old, 17.6% for the group 15-19 years old, 33.5% for the group 20-24 years old, 29.1% for the group 30-34 years old, 4.8% for the group 35-39 years old and 0.9% for the group over 40 years old.



Born live babies on the mother's age group

Influenced as well by behavioural factors as by economic factors, the couples' fertility decreased. A high level in the new born ratio was maintained at rank first and second child, reaching in 2003 81.5% of the number of born live babies.

Although the general birth rate remained dependent on legitimate fertility (during marriage) – 62.6% of the number of new born babies- the number of

new born babies outside marriage is maintained at a high level (37.4%), with higher rates in the rural area. Of the total of 2,437 born live babies outside marriage in 2003, 62.8% are from the rural area.

This tendency determines the increase of the number of mono-parental families, with their specific problems.

In the territorial profile, in 2003, the birth rate was inferior to the county birth rate (9 ‰) in 51 localities with minimum values in Gogosu (2.1 ‰), Bulzesti (2.8 ‰), Maglavit (3.1‰), Dranic (5.3‰), Orodel (5.4‰), Teasc (5.5‰). Maximum values were reached in Salcuta (18.8‰), Bechet (17.5‰), Bralostita (15.5‰), Lipovu (14.5‰), Sadova (14.0‰).

Under the influence of mutations in the structure on ages and changes in the population's health condition, **the general mortality** slightly din 2003 as compared to 2002. Thus, the number of demises in 2003 of 10,415 persons decreased with 315 persons, as compared to the previous year.

In the urban environment, the mortality rate decreased, in the rural environment the mortality rate overpassed the mortality rates from the urban area (19.7‰ as compared to 9.1‰). From the point of view of the mortality rate, the dolj county is amongst the Romanian counties with a relatively high mortality rate, overpassing the mortality average on the country which is of 12.3 demises to 1,000 inhabitants, a phenomenon caused by the demographic ageing of the population in Dolj county.

The analysis of the structure of demises on age groups reveals that we witness an increase of the total number of demises while the evolution of ratios on age groups differs as a tendency.

The male population mortality is constantly superior to the female population mortality, as well on total, as on age groups. The prevalent male mortality is maintained at all age groups under 75 years old, with significant differences between 40-69 years old.

The mortality structure following the causes of the demise shows that in 2003, this was due to chronic diseases, first of the circulatory apparatus, which included 71.3% of the total number of demises, followed by tumors (12.4% in 2003 and 12.2% in 2002) and diseases of the respiratory apparatus (4.5% in 2003 and 4.9% in 2002).

In general, the mortality rates show higher values for the male population as compared to the female population,- in most of the diseases, with significant differences in the case of : tuberculosis, diseases of the digestive apparatus and accidents, poisonings and traumatism.

The tendencies in the evolution of mortality on death causes can be explained by the fact that we witness a decrease of the cases of diseases of the circulatory apparatus (-192 cases), simultaneously with those generated by diseases of the respiratory apparatus and nervous system diseases.

In a territorial profile, in 2003, the highest values of mortality rates were registered in: Seaca de Pădure (36,4‰), Gogoșu (35,0‰), Măceșu de Sus (34,7‰), Vârtop (33,6‰) and Brabova (33,1‰). Minimum values were registered in the following localities: Braloștița (13,1‰), Bechet (12,7‰), Cerăt (11,0‰), Filiași (9,4‰) and Craiova (8,4‰).

The infant mortality in 2003 registered an increase as compared to 2002 (118 deceased under 1 year old in 2003, as compared to 122 deceased under 1 year old in 2002). The infant mortality level in our county (18.1 deceased under 1 year old to 1,000 born live babies) decreased as compared to the national level (19.7 deceased under 1 year old to 1,000 born live babies).

The main death causes, in the case of infant mortality, are the diseases of the respiratory apparatus and chromosomal anomalies reaching in 2003, 70.3% of the total number of demises under 1 year old.

In 2003, in a territorial profile, the highest infant mortality values were registered in the communes: Giurgita (500.0 to 1,000 born live babies), Brabova (200.0 ‰), Bulzesti (200.0‰), Radovan (125.0‰), Vartop (87.0‰).

The ascending evolution of mortality determined a negative natural profit of 3,905 persons in 2003. The natural profit rate of -5.4 was higher than in the previous year (-5.9‰). On environments, the natural profit presents relatively high variations, oscillating between -0.4‰ in the urban environment and -10.4‰ in the rural environment.

The number of **marriages** in 2003 was of 3,932, with 50 marriages less than in 2002, that is 5.4 marriages to 1,000 inhabitants (5.3‰ in 2002).

The more accentuated diminution of this phenomenon in the rural area, lead to an increase of the disparity between the two environments so that, in 2003, we had a marriage rate of 6.6 marriages to 1,000 inhabitants in the urban environment, and 4.2 marriages to 1,000 inhabitants in the rural environment.

In a territorial profile, the marriage rate varied in 2003 between 1.1 marriages to 1,000 inhabitants in the Terpezita commune and 8.0‰ in the Tuglui commune.

The number of divorces in 2003 increased with 117 as compared to 2002, the divorce rate increasing from 0.43‰ to 0.603‰.

In 2003, there was a divorce registered at every 15 marriages, as compared to 2002 when there was one divorce to 12 marriages.

There is still a gap between the urban and rural environment, the divorce rate being higher in the urban area. In 2003, of the total number of divorces almost 59.2‰ were registered in the urban environment.

The main reasons invoked for the dissolution of marriage are: conjugal infidelity (20.5% of total), alcoholism (13.1% of total) and physical violence (14.3 % of total).

In a territorial profile, in 2003, the divorce rate oscillated between 0.15 divorces to 1,000 inhabitants in the Podari commune and 2.16‰ in the Silsitea Crucii commune. At the same time, in several localities: Amărăștii de Sus, Bechet, Brabova, Braloștița, Botoșești-Paia, Bucovăț, Bulzești, Carpen, Celaru,

Daneți, Dobrești, Gogoșu, Mârșani, Orodul, Pielești, Piscu Vechi there was no divorce registered during 2003.

After the explosive increase in 1990, the volume of **territorial mobility** decreased, reaching in 2003, 12.9 establishments of residence to 1,000 inhabitants, and 13.3 leavings of residence in locality to 1,000 inhabitants.

Significant modifications were registered in the evolutions of fluxes determined by the change of the place of residence from the rural area to the urban area and from the urban area to the rural area. Even though the migratory movement from the village to the town constituted the main direction of migration, we can notice an increase of number of changes of the place of residence from cities and towns to communes, influenced by the legislative changes concerning the property on plots of land and by the present social-economic conditions.

2. THE POPULATION

2.1. Population and the demographic structure

2.1.1. Stable population on gender

	-pers			
	2002		2003	
	1st of January	1st of July	1st of Jan.	1st of July
A	1	2	3	4
TOTAL	740104	730214	727758	725342
Male	360799	355833	354829	353436
Female	3793	374381	37292	371906
In % as compared to the total	100,0		100,0	100,0
	48,8	48,7	48,8	48,7
Female	51,2	51,3	51,2	51,3

2.1.2. Stable population on environments

- persons -				
2002			2003	
	1st of Jan.	1st of July	1st of Jan.	1st of July
A	1	2	3	4
TOTAL	740104	730214	727758	725342
Urban	382047		368530	368080
Rural	358057	361816	359228	357262
In % as compared to	100,0		100,0	
Urban	5	50,5	50	50,7
Rural	4	49,5	49	49,3

2.1.3. Population on age groups, gender and environments on the 1st of July

- p						
Age groups	2002			2003		
	Total	Male	F	Total	Male	Female
A	1	2	3	4	5	6
	7	3	3	7	3	3
• 0 -4 years old	34991	18029	16962	33971	17457	16514
• 5 -9 years old	37230	18951	18279	36557	18568	17989
• 10-14 years old	48134	24648	23486	45492	23276	22216
• 15-19 years old	51481	26453	25028	52421	27054	25367

• 20-24 years old	5	2	2	53122	2	2
• 25-29 years old	5	2	2	5	2	2
•	61077	31028	30049	54535	27562	26973
• 35-39 years old	39378	19811	19567	48171	24344	23827
• 40-44 years old	47951	24167	23784	44915	22633	22282
	52008	26068	25940	52224	26154	26070
• 50-54 years old	49076	23752	25324	48965	23809	25156
• 55-59 years old		18383	20114	40959	19500	21459
• 60-64 years old	42473	1	2	3	17	21
• 65-69 years old	43087	1	2	4	19	24
• 70-74 years old	34146	14789	19357	3	1	1
• 75-79 years old	25299	10264	15035	2	1	1
• 80-84 years old	9882	3433	6449	1	4144	7635
• 85 years old and over 85 y.o.	6031	1966	4065	5016	1602	3414
Of the total :						
ENVIRONMENT						
TOTAL	3	17	19	3	17	19
• 0 -4 years old	15465	8000	7465	15193	7825	7368
• 5 -9 years old	16786	8500	8286	16228	8242	7986
• 10-14 years old	26009	1	1	23833	1	1
• 15-19 years old	3	1	1	3	1	1
• 20-24 years old	3	16	1	3	1	1
• 25-29 years old	2	14	1	3	15	1
•	34748	16387	18361	30218	14294	15924
• 35-39 years old	23674	10947	12727	29017	13497	15520
• 40-44 years old	30352	14383	15969	28257	13288	14969

• 50-54 years old	22971	10716	12255	22043	10333	11710
• 55-59 years old	22113		11701	22750		12131
• 60-64 years old		12227	14597	24346	11012	13334
• 65-69 years old	28852	12916	15936	28962	12978	15984
70-74 years old	23549	10190	13359	23260	9989	13271
	17915	7275	10640	18022	7362	10660
• 80-84 years old	7066	2489	4577	8374	2986	5388
• 85 years old and over 85 y.o		1369	2867	3440	1108	2332

2.1.4. Population on environments, gender and age groups

	- pe					
Age group	2			2		
	T	M	Fe	T	M	Fe
A	1	2	3	4	5	6
TOTAL	730214	355833	374381	725342	353436	371906
•0-4 years old	34991	18029	16962	33971	17457	16514
	6525	3475	3050	6352	3225	3127
◆ 1 years old	6783	3443	3340	6484	3452	3032
◆ 2 years old	7169	3610	3559	6766	3434	3332
◆ 3 years old	7209	3752	3457	7178	3609	3569
◆ 4 years old	7305	3749	3556	7191	3737	3454
•5-9 years old		18951	18279		18568	17989
	6911	3524	3387	7301	3746	3555
◆	7259	3675	3584	6912	3525	3387
◆ 7 years old	7281	3698	3583	7248	3674	3574
◆ 8 years old	7836	3933	3903	7277	3694	3583
◆ 9 years old	7943	4121	3822	7819	3929	3890

•10-14 years old	4	2	2	45492	2	2
◆ 10 years old	8573	4351	4222	7944	4119	3825
◆ 11 years old	8332	4324	4008	8578	4350	4228
◆ 12 years old	10517	5375	5142	8327	4319	4008
◆ 13 years old	10107	5116	4991	10528	5384	5144
◆ 14 years old	10605	5482	5123	10115	5104	5011
•1	51481	2	2	52421	2	2
◆ 15 years old	10865	5696	5169	10648	5506	5142
◆ 16 years old	10137	5192	4945	10882	5705	5177
◆ 17 years old	10695	5434	5261	10146	5188	4958
◆ 18 years old	10016	5164	4852	10720	5454	5266
◆ 19 years old	9768	4967	4801	10025	5201	4824
•2	55157	2	2	53122	2	2
◆ 20 years old	10291	5078	5213	9699	4971	4728
◆ 21 years old	10983	5469	5514	10112	5057	5055
◆ 22 years old	11526	5816	5710	10786	5409	5377
◆ 23 years old	11223	5724	5499	11369	5762	5607
◆ 24 years old	11134	5661	5473	11156	5717	5439
•2	54316	2	2	54979	2	2
◆ 25 years old	11246	5672	5574	11028	5636	5392
◆ 26 years old	1	5603	5421	11178	5647	5531
◆ 27 years old	1	5766	5493	1	5587	5420
◆ 28 years old	1	5354	5181	1	5768	5499
◆ 29 years old	1	5126	5126	1	5337	5162
•3	6	3	3	5	2	2
◆ 30 years old	10077	5112	4965	10231	5110	5121
◆ 31 years old	1	5211	5164	1	5083	4951
◆ 32 years old	1	5753	5457	1	5199	5159
◆ 33 years old	1	6450	6274	1	5739	5467

◆ 34 years old	1	8502	8189	1	6431	6275
●3	39378	1	1	4	2	2
◆ 35 years old	8729	4343	4386	16655	8475	8180
◆ 36 years old	7553	3806	3747	8704	4328	4376
◆ 37 years old	7696	3910	3786	7529	3804	3725
◆ 38 years old	7632	3854	3778	7687	3910	3777
◆ 39 years old	7768	3898	3870	7596	3827	3769
●4	47951	2	2	4	2	2
◆ 40 years old	8912	4529	4383	7723	3867	3856
◆ 41 years old	9489	4743	4746	8883	4508	4375
◆ 42 years old	9223	4710	4513	9449	4723	4726
◆ 43 years old	9706	4872	4834	9195	4689	4506
◆ 44 years old	1	5313	5308	9665	4846	4819
●4	5	2	2	5	2	2
◆ 45 years old	10730	5387	5343	10553	5263	5290
◆ 46 years old	10465	5302	5163	10685	5362	5323
	11403	5682	5721	10424	5270	5154
◆ 48 years old	9284	4664	4620	1	5643	5698
◆ 49 years old	1	5033	5093	9221	4616	4605
●5	4	2	2	4	2	2
◆ 50 years old	9420	4541	4879	1	4984	5075
◆ 51 years old	9558	4682	4876	9339	4483	4856
◆ 52 years old	10331	4980	5351	9462	4621	4841
◆ 53 years old	9969	4883	5086	1	4911	5323
◆ 54 years old	9798	4666	5132	9871	4810	5061
●5	3	1	2	4	1	2
◆ 55 years old	8931	4300	4631	9700	4601	5099

◆ 56 years old	7395	3555	3840	8836	4235	4601
◆ 57 years old	7338	3513	3825	7305	3504	3801
◆ 58 years old	8020	3811	4209	7238	3445	3793
◆ 59 years old	6813	3204	3609	7880	3715	4165
•6	4	1	2	3	1	2
◆ 60 years old	8303	4008	4295	6710	3123	3587
◆ 61 years old	6856	3079	3777	8139	3889	4250
◆ 62 years old	8754	3954	4800	6716	2993	3723
◆ 63 years old	9091	4085	5006	8596	3850	4746
◆ 64 years old	9469	4377	5092	8883	3959	4924
•6	4	1	2	4	1	2
◆ 65 years old	9986	4521	5465	9288	4257	5031
◆ 66 years old	9480	4370	5110	9707	4341	5366
◆ 67 years old	8189	3618	4571	9205	4195	5010
◆ 68 years old	7808	3495	4313	7896	3440	4456
◆ 69 years old	7624	3315	4309	7544	3340	4204
•7	3	1	1	3	1	1
◆ 70 years old	7594	3402	4192	7358	3166	4192
◆ 71 years old	7093	2993	4100	7280	3217	4063
◆ 72 years old	6800	2	3835	6794	2832	3962
◆ 73 years old	6279	2	3549	6508	2	3690
◆ 74 years old	6380	2	3	5914	2	3385
•7	25	10	15	2	10	15
◆ 75 years old	5946	2501	3445	5995	2504	3491
◆ 76 years old	5694	2321	3373	5545	2290	3255
◆ 77 years old	5223	2163	3060	5282	2125	3157
old	4513	1815	2698	4821	1973	2848
◆ 79 years old	3923	1464	2459	4055	1601	2454
	9882	3433	6449	11779	4144	7635

◆ 80 years old	3291	1199	2092	3536	1302	2234
	2587	880	1707	2889	1057	1832
◆ 82 years old	2193	749	1444	2277	756	1521
◆ 83 years old	1370	460	910	1903	638	1265
◆ 84 years old	441	145	296	1174	391	783
●85 years old and ov	6031	1966	4065	5016	1602	3414
Of the total:						
UR ENVIRONMENT	36	17	19	36	17	19
●0	1	8000	7465	1	7825	7368
◆ 0 years old	3035	1582	1453	2992	1532	1460
◆ 1 years old	3041	1573	1468	3008	1570	1438
◆ 2 years old	3088	1550	1538	3021	1562	1459
◆ 3 years old	3092	1621	1471	3088	1548	1540
◆ 4 years old	3209	1674	1535	3084	1613	1471
●5	1	8500	8286	1	8242	7986
◆ 5 years old	2948	1501	1447	3212	1672	1540
◆ 6 years old	3263	1667	1596	2940	1500	1440
◆ 7 years old	3250	1587	1663	3262	1668	1594
◆ 8 years old	3584	1817	1767	3247	1588	1659
◆ 9 years old	3741	1928	1813	3567	1814	1753
●1	2	1	1	2	1	1
◆ 10 years old	4285	2190	2095	3744	1921	1823
◆ 11 years old	4334	2211	2123	4296	2191	2105
◆ 12 years old	5650	2841	2809	4337	2219	2118
◆ 13 years old	5658	2839	2819	5644	2841	2803

◆ 14 years old	6082	3112	2970	5812	2905	2907
●1	3	1	1	3	1	1
◆ 15 years old	6131	3182	2949	6173	3154	3019
◆ 16 years old	6000	3079	2921	6123	3165	2958
◆ 17 years old	6440	3256	3184	6010	3068	2942
◆ 18 years old	6192	3157	3035	6481	3273	3208
◆ 19 years old	6127	3065	3062	6254	3207	3047
●2	3	1	1	3	1	1
◆ 20 years old	6467	3193	3274	6066	3080	2986
◆ 21 years old	6905	3410	3495	6375	3208	3167
◆ 22 years old	7051	3513	3538	6761	3361	3400
◆ 23 years old	6689	3361	3328	6963	3448	3515
◆ 24 years old	6375	3196	3179	6642	3314	3328
●2	2	1	1	3	1	1
◆ 25 years old	6296	3097	3199	6395	3182	3213
◆ 26 years old	6092	2990	3102	6334	3105	3229
◆ 27 years old	6021	3009	3012	6140	3009	3131
◆ 28 years old	5670	2784	2886	6119	3047	3072
◆ 29 years old	5375	2583	2792	5716	2786	2930
●3	3	1	1	3	1	1
◆ 30 years old	5271	2496	2775	5411	2601	2810
◆ 31 years old	5723	2675	3048	5320	2512	2808
◆ 32 years old	6279	2955	3324	5750	2696	3054
◆ 33 years old	7370	3507	3863	6331	2962	3369
◆ 34 years old	1	4754	5351	7406	3523	3883
●3	2	1	1	2	1	1
◆ 35 years old	5110	2349	2761	1	4755	5362
◆ 36 years old	4517	2063	2454	5099	2331	2768
◆ 37 years old	4604	2162	2442	4528	2067	2461

◆ 38 years old	4665		2499	4596	2165	2431
◆ 39 years old	4778	2207	2571	4677	2179	2498
●4	3	1	1	2	1	1
◆ 40 years old	5587		2985	4763	2198	2565
◆ 41 years old	5935	2722	3213	5570	2592	2978
◆ 42 years old	5903	2883	3020	5904	2708	3196
◆ 43 years old	6172	2955	3217	5899	2881	3018
◆ 44 years old	6755	3221	3534	6121	2909	3212
●4	3	1	1	3	1	1
◆ 45 years old	6888	3384	3504	6693	3176	3517
◆ 46 years old	6641	3345	3296	6833	3350	3483
◆ 47 years old	7227	3577	3650	6604	3321	3283
◆ 48 years old	5761	2889	2872	7183	3547	3636
◆ 49 years old	6051	3094	2957	5711	2844	2867
●5	2	1	1	2	1	1
◆ 50 years old	5353	2641	2712	5999	3062	2937
◆ 51 years old	5296	2622	2674	5273	2585	2688
◆ 52 years old	5543	2744	2799	5215	2576	2639
◆ 53 years old	5047	2619	2428	5455	2678	2777
◆ 54 years old	4866	2410	2456	4980	2575	2405
●5	1	7971	8413	1	8881	9328
◆ 55 years old	4135	2030	2105	4815	2372	2443
◆ 56 years old	3234	1628	1606	4075	1990	2085
◆ 57 years old	3020	1441	1579	3187	1604	1583
◆ 58 years old	3254	1568	1686	2957	1397	1560
◆ 59 years old	2741	1304	1437	3175	1518	1657
●6	1	7276	8373	1	6802	7896
◆ 60 years old	3135	1523	1612	2698	1264	1434
◆ 61 years old	2609	1193	1416	3063	1464	1599

◆ 62 years old	3285	1525	1760	2546	1160	1386
◆ 63 years old	3247	1	1766	3217	1481	1736
◆ 64 years old	3373	1	1819	3174	1	1741
●6	1	6	7832	1	6	8083
◆ 65 years old	3227	1	1754	3303	1	1795
◆ 66 years old	3172	1464	1708	3127	1404	1723
◆ 67 years old	2747	1	1519	3076	1	1675
◆ 68 years old	2607	1	1451	2649	1	1
◆ 69 years old	2482	1	1	2523	1	1
●7	1	4	5	1	4	6
◆ 70 years old	2400	1	1	2395	1	1
◆ 71 years old	2264	945	1319	2308	1054	1254
◆ 72 years old	2	913	1	2156	883	1
◆ 73 years old	1	809	1	1	865	1
◆ 74 years old	1	825	1	1	744	1
●7	7	2	4	7	3	4
◆ 75 years old	1	7	1	1	775	1
◆ 76 years old	1692	687	1005	1678	712	966
◆ 77 years old	1535	629	906	1587	631	956
	1241	487	754	1427	580	847
◆ 79 years old	1115	403	712	1108	433	675
●80-84 years old		944	1872	3405	1158	2247
◆ 80 years old	937	326	611	1035	375	660
◆ 81 years old	756	252	504	834	291	543
◆ 82 years old	581	200	381	682	216	466
◆ 83 years old	389	122	267	517	174	343
◆ 84 years old	153	44	109	337	102	235
●85 years old and ov	1795	597	1198	1576	494	1082

RURAL	36	17	18	35	17	18
•0	1	1	9497	1	9632	9146
◆ 0 years old	3490	1893	1597	3360	1693	1667
◆ 1 years old	3742	1870	1872	3476	1882	1594
◆ 2 years old	4081	2060	2021	3745	1872	1873
◆ 3 years old	4117	2131	1986	4090	2061	2029
◆ 4 years old	4096	2075	2021	4107	2124	1983
•5	2	1	9993	2	1	1
◆ 5 years old	3963	2023	1940	4089	2074	2015
◆ 6 years old	3996	2008	1988	3972	2025	1947
◆ 7 years old	4031	2111	1920	3986	2006	1980
◆ 8 years old	4252	2116	2136	4030	2106	1924
◆ 9 years old	4202	2193	2009	4252	2115	2137
•1	2	1	1	2	1	1
◆ 10 years old	4288	2161	2127	4200	2198	2002
◆ 11 years old	3998	2113	1885	4282	2159	2123
◆ 12 years old	4867	2534	2333	3990	2100	1890
◆ 13 years old	4449	2277	2172	4884	2543	2341
◆ 14 years old	4523	2370	2153	4303	2199	2104
•1	2	1	9877	2	1	1
◆ 15 years old	4734	2514	2220	4475	2352	2123
◆ 16 years old	4137	2113	2024	4759	2540	2219
◆ 17 years old	4255	2178	2077	4136	2120	2016
◆ 18 years old	3824	2007	1817	4239	2181	2058
◆ 19 years old	3641	1902	1739	3771	1994	1777
•2	2	1	1	2	1	9810
◆ 20 years old	3824	1885	1939	3633	1891	1742
◆ 21 years old	4078	2059	2019	3737	1849	1888
◆ 22 years old	4475	2303	2172	4025	2048	1977

◆ 23 years old	4534	2363	2171	4406	2314	2092
◆ 24 years old	4759	2465	2294	4514	2403	2111
•2	2	1	1	2	1	1
◆ 25 years old	4950	2575	2375	4633	2454	2179
◆ 26 years old	4932	2613	2319	4844	2542	2302
◆ 27 years old	5238	2757	2481	4867	2578	2289
◆ 28 years old	4865	2570	2295	5148	2721	2427
◆ 29 years old	4877	2543	2334	4783	2551	2232
•3	2	1	1	2	1	1
◆ 30 years old	4806	2616	2190	4820	2509	2311
◆ 31 years old	4652	2536	2116	4714	2571	2143
◆ 32 years old	4931	2798	2133	4608	2503	2105
◆ 33 years old	5354	2943	2411	4875	2777	2098
◆ 34 years old	6586	3748	2838	5300	2908	2392
•3	1	8864	6840	1	1	8307
◆ 35 years old	3619	1994	1625	6538	3720	2818
◆ 36 years old	3036	1743	1293	3605	1997	1608
◆ 37 years old	3092	1748	1344	3001	1737	1264
◆ 38 years old	2967	1688	1279	3091	1745	1346
◆ 39 years old	2990	1691	1299	2919	1648	1271
•4	1	9784	7815	1	9345	7313
◆ 40 years old	3325	1927	1398	2960	1669	1291
◆ 41 years old	3554	2021	1533	3313	1916	1397
◆ 42 years old	3320	1827	1493	3545	2015	1530
◆ 43 years old	3534	1917	1617	3296	1808	1488
◆ 44 years old	3866	2092	1774	3544	1937	1607
•4	1	9779	9661	1	9916	9284
◆ 45 years old	3842	2003	1839	3860	2087	1773
◆ 46 years old	3824	1957	1867	3852	2012	1840

◆ 47 years old	4176	2105	2071	3820	1949	1871
◆ 48 years old	3523	1775	1748	4158	2096	2062
◆ 49 years old	4075	1939	2136	3510	1772	1738
•5	2	1	1	2	1	1
◆ 50 years old	4067	1900	2167	4060	1922	2138
◆ 51 years old	4262	2060	2202	4066	1898	2168
◆ 52 years old	4788	2236	2552	4247	2045	2202
◆ 53 years old	4922	2264	2658	4779	2233	2546
◆ 54 years old	4932	2256	2676	4891	2235	2656
•5	2	1	1	2	1	1
◆ 55 years old	4796	2270	2526	4885	2229	2656
◆ 56 years old	4161	1927	2234	4761	2245	2516
◆ 57 years old	4318	2072	2246	4118	1900	2218
◆ 58 years old	4766	2243	2523	4281	2048	2233
◆ 59 years old	4072	1900	2172	4705	2197	2508
•6	2	1	1	2	1	1
◆ 60 years old	5168	2485	2683	4012	1859	2153
◆ 61 years old	4247	1886	2361	5076	2425	2651
◆ 62 years old	5469	2429	3040	4170	1833	2337
◆ 63 years old	5844	2604	3240	5379	2369	3010
◆ 64 years old	6096	2823	3273	5709	2526	3183
•6	2	1	1	2	1	1
◆ 65 years old	6759	3048	3711	5985	2749	3236
◆ 66 years old	6308	2906	3402	6580	2937	3643
◆ 67 years old	5442	2390	3052	6129	2794	3335
◆ 68 years old	5201	2339	2862	5247	2270	2977
◆ 69 years old	5142	2233	2909	5021	2228	2793
•7	2	1	1	2	9989	1
◆ 70 years old	5194	2295	2899	4963	2139	2824

◆ 71 years old	4829	2048	2781	4972	2163	2809
	4762	2052	2710	4638	1949	2689
◆ 73 years old	4378	1	2457	4558	1	2605
◆ 74 years old	4386	1	2512	4129	1	2344
●7	1	7	1	1	7	1
◆ 75 years old	4	1	2	4119	1	2
◆ 76 years old	4	1	2	3	1	2
◆ 77 years old	3688	1534	2154	3695	1494	2201
◆ 78 years old	3272	1328	1944	3394	1393	2001
◆ 79 years old	2808	1061	1747	2947	1168	1779
●80-84 years old	7066	2489	4577	8374	2986	5388
◆ 80 years old	2354		1481	2501		1574
◆ 81 years old		628	1203	2055	766	1289
◆ 82 years old	1612		1063	1595	540	1055
◆ 83 years old		338	643	1386	464	922
◆ 84 years old	288	101	187	837	289	54
● ove	4236	1369	2867	3440	1108	2332

2.1.5. Population on localities and gender on the 1st of July

Locality	pe					
	2002			2003		
	Total	Male	Female	Total	Male	Female
	1	2	3	4	5	6
TOTAL	730214	355833	374381	725342	353436	371906
AND CITIES	368398	178389	190009	368080	177978	190102

• Craiova	30	14	15	30	14	15
• Băilești	2	1	1	2	1	1
• Calafat	1	9367	9830	1	9235	9720
• Filiași	1	9570	9855	1	9487	9764
• Segarcea	8509	4148	4361	8389	4087	4302
COMMUNES	36	177	184	357	175	181
• Afumați	3163	1	1	3090	1	1
• Almăj	4041	1945	2096	3966	1932	2034
• Amărăștii de Jos	5981	2906	3075	5914	2868	3046
• Amărăștii de Sus	3767	1853	1914	3727	1836	1891
• Apele Vii	2446	1284	1162	2414	1266	1148
• Argetoaia	4831	2371	2460	4838	2380	2458
• Bechet	3992	1	2	3996	1	2
• Bistreț	4571	2257	2314	4484	2217	2267
• Bârca	4365	2090	2275	4259	2031	2228
• Botoșești-Paia	1013	500	513	992	488	504
• Brabova	1846	850	996	1775	825	950
• Brădești	4604	2237	2367	4588	2241	2347
• Braloștița	3975	2009	1966	3965	2006	1959
• Bratovoești	6124	3050	3074	6017	3011	3006
• Breasta	3889	1940	1949	3906	1969	1937
• Bucovăț	4001	1982	2019	3991	1975	2016
• Bulzești	1819	872	947	1792	855	937
• Calopăr	3941	1973	1968	3925	1972	1953
• Caraula	2600	1258	1342	2566	1235	1331
• Carpen	2938	1457	1481	2856	1430	1426
• Castranova	3608	1783	1825	3542	1758	1784
• Călărași	6683	3321	3362	6632	3285	3347

• Celaru	5284	2679	2605	5146	2599	2547
• Cerăt	4155	2067	2088	4169	2074	2095
• Cernătești	2188	1082	1106	2140	1060	1080
• Cetate	5976	2905	3071	5921	2875	3046
• Cioroiași	1902	951	951	1834	917	917
• Ciupercenii Noi	6064	3014	3050	5998	2979	3019
• Coșoveni	4746	2270	2476	4685	2262	2423
• Coțofenii din Dos	2670	1	1	2623	1	1
• Daneți	7254	3685	3569	7118	3607	3511
• Dăbuleni	1	6861	7095	1	6777	6992
• Desa	5065	2506	2559	5029	2501	2528
• Dioști	3440	1742	1698	3375	1715	1660
• Dobrești	2813	1	1	2	1	1
• Drăgotești	2481	1206	1275	2419	1172	1247
• Drănic	3013	1459	1554	3025	1458	1567
• Fărcaș	3479	1	1	3456	1	1
• Galicea Mare	4918	2451	2467	4878	2416	2462
• Ghercești	1730	814	916	1713	812	901
• Gighera	3580	1696	1884	3520	1668	1852
• Giubega	4206	2066	2140	4159	2045	2114
• Giurgîța	3193	1	1	3176	1	1
• Gângiova	2879	1	1	2817	1	1
• Gogoșu	1014	485	529	974	464	510
• Goicea	4709	2252	2457	4596	2212	2384
• Goiști	3221	1574	1647	3169	1554	1615
• Grecești	1973	985	988	1939	972	967
• Ișalnița	3924	1949	1975	3881	1930	1951
• Izvoare	2128	1043	1085	2080	1012	1068
• Leu	5445	2686	2759	5337	2635	2702

• Lipovu	3295	1628	1667	3308	1622	1686
• Măceșu de Jos	1603	786	817	1551	763	788
• Măceșu de Sus	1680	801	879	1619	771	848
• Maglavit	5780	2	3	5704	2	2
• Malu Mare	4796	2346	2450	4801	2355	2446
• Melinești	4261	2066	2195	4188	2040	2148
• Mischii	1718	797	921	1703	793	910
• Mârșyears old	5301	2690	2611	5167	2627	2540
• Moțăței	8238	4126	4112	8170	4110	4060
• Murgași	2756	1306	1450	2729	1302	1427
• Negoii	4357	2123	2234	4352	2114	2238
• Orodel	3204	1558	1646	3162	1550	1612
• Ostroveni	5807	2856	2951	5714	2822	2892
• Perișor	1879	908	971	1836	890	946
• Pielești	3564	1693	1871	3509	1672	1837
• Piscu Vechi	5428	2693	2735	5399	2685	2714
• Plenița	5366	2	2	5293	2	2
• Podari	6415	3	3	6494	3	3
• Poiana Mare	1	5	6	1	5	6
• Predești	3596	1	1841	3542	1	1807
• Radovan	2010	1414	1406	2000	1200	1480
• Rest	2745	1885	1860	2682	1856	1826
	2682	1288	1394	2641	1269	1372
• Sadova	8562	4	4286	8529	4	4
• Sălcuța	2549	1211	1338	2496	1198	1298
• Scaești	2245	1093	1152	2230	1090	1140
• Seaca de Câmp	2225	1093	1132	2191	1084	1107
• Seaca de Pădure	1401	651	750	1345	625	720
• Secu	1305	656	649	1299	645	654
• cii	1907	950	957	1852	923	929

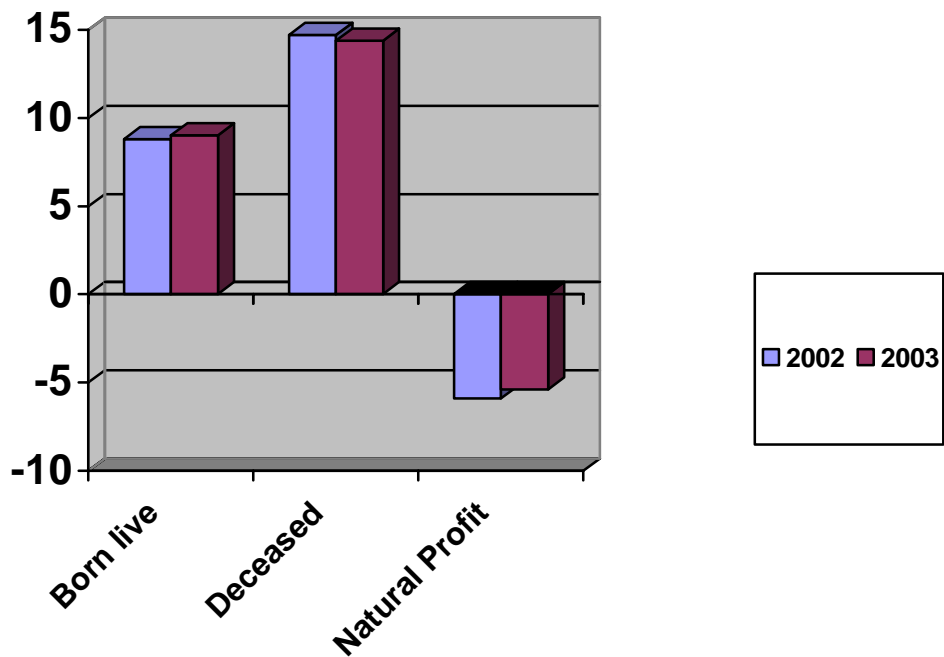
• Sopot	2007	970	1037	1956	945	1011
• Şimnicu de Sus	4175	2	2	4167	2	2
• Teasc	3322	1	1	3280	1	1
• Terpezița	1920	903	1017	1855	873	982
• Teslui	2744	1329	1415	2696	1304	1392
• Țuglui	2911	1431	1480	2871	1423	1448
• Unirea	4167	2119	2048	4115	2092	2023
• Urzicuța	3027	1483	1544	2969	1454	1515
• Valea Stanciului	6273	3025	3248	6203	29	3204
• Vela	2174		1102	2125	1	1071
• Verbița	1534	85	749	1517	78	730
	1767	874	893	1718	854	864
e Jos	3221		1717	3123	1448	1

2.2. Natural movement of population

2.2.1. Natural movement of population on environments

	200			2003		
	T	Urb	Ru	T	Urb	Ru
A	1	2	3	4	5	6
number						
• Born live	6	2	3490	6	3	3334
• Deceased	10	34	73	10	33	7
• Natural profit	-	-461	-3	-	-163	-
• Marriages	3	23	15	3	24	1
•	317	203	114	434	257	177
	8	5	3	13	6	7

• Deceased of less than 1 y.o.	122	48	74	118	42	76
• Born live	8,8	8,0	9,6	9,0	8,7	9,3
• Deceased	14,7	9,3	20,2	14,4	9,1	19,7
• Natural profit	-5,9	-1,3	-10,6	-5,4	-0,4	-10,4
• Marriages	5,3	6,4	4,2	5,4	6,6	4,2
• Divorces	0,43	0,55	0,31	0,60	0,70	0,49
• Born dead to 1000 new born babies	1,2	1,7	0,9	2,0	1,9	2,1
• Deceased of less than 1 y.o. to 1000 born live	18,9	16,2	21,2	18,1	13,2	22,8



Rates of Natural Profit

2.2.2. Born live following their parents' age group, on environments

age group	T	Father's age group									Undeclared	
		under 15	15-19	20-24	25-29	30-34	35-39	40-44	45-49	50 years old		
		years old	years	years	years	years	years	years	years	years	→	
		1	2	3	4	5	6	7	8	9	10	11
	644	1	182	124	230	144	458	202	72	17	525	
• 15 years old	37	-	17	10	3	2	-	-	-	-	5	
• years old	118	1	144	461	338	64	9	1	-	-	164	
• years old	230	-	20	652	101	351	65	9	2	3	183	
• years old	178	-	1	109	843	565	122	45	4	2	95	
• years	869	-	-	5	97	414	191	78	20	5	59	
• 35-39 years old	22	-	-	3		46	69	50	22	4	17	

•40-44 years old	50	-	-	-	-	2	2	19	22	3	2
• years old	2	-	-	-	-	-	-	-	2	-	-
URBAN	295	1	63	465	107	749	224	100	34	9	233
years old	8	-	4	3	-	1	-	-	-	-	-
•15-19 years old	321	1	5	11	6	13	2	1	-	-	6
•20-24 years old	9	-	6	27	43	13	2	3	-	3	9
•25-29 years old	96	-	1	6	50	29	4	1	2	2	4
•30-34 years	529	-	-	4	69	277	106	37	7	3	26
•35-39 years	133	-	-	1		31	45	34	11	1	6
• years old	29	-	-	-	-	1	2	12	13	-	1
• years old	1	-	-	-	-	-	-	-	1	-	-
RURAL	349	-	119	775	122	695	234	102	38	8	292

	0	7									
• 15 years old	29	-	13	7	3	1	-	-	-	-	5
• years old	861	-	92	343	270	51	7	-	-	-	98
• years old	132	-	14	373	582	218	40	6	2	-	93
• years old	823	-	-	49	339	272	78	32	2	-	51
• years old	340	-	-	1	28	137	85	41	13	2	33
• 35-39 years old	87	-	-	2	5	15	24	16	11	3	11
• 40-44 years old	21	-	-	-	-	1	-	7	9	3	1
• years old	1	-	-	-	-	-	-	-	1	-	-
	651	1	187	109	232	141	604	180	78	31	597
• 15 years old	27	1	13	5	3	-	-	-	-	-	5

• 15-19 years old	114 9		14	44	30	64	13	1	-	-	1
• 20-24 years old	2 1		2	53	10 4	31	6	7	-	4	21
• 25-29 years old	18 3		1	9	87	60	17	2	8	4	10
• 30-34 years old	894	-	-	17	119	381	216	64	23	9	
• years old		-	-	-	6	55	129	68	26	11	19
• 40-44 years old	49	-	-	-	2	2	3	1	2	1	5
• years old	3	-	-	-	-	-	1	-	-	2	-
	317 6	-	75	467	0	319		33	21	250	
Under 15 years old	10	-	5	2	1	-	-	-	-	-	2
years old	344	-	5	14	6	10	2	1	-	-	6
• 20-24 years old	9	-	1	25	42	11	2	1	-	3	9
• 25-29 years	11 8		1	6	58	33	7	1	2	2	4

old											
• 30-34	544	-	-	9	77	272	119	23	8	5	31
old											
• 35-39	200	-	-	-	6	42	90	35	10	9	8
years											
•	29	-	-	-	2	1	2	8	13	-	3
years											
old											
•	3	-	-	-	-	-	1	-	-	2	-
years											
old											
	333	1	11	6	116	644	2	1	4	1	3
	4				2						
	17	1	8	3	2	-	-	-	-	-	3
15 years											
old											
• 15-19	805	-	8	29	23	54	11	-	-	-	1
years											
old											
• 20-24	1		1	28	58	20	3	6	-	1	12
years	3										
old											
• 25-29	77	-	-	3	29	26	9	1	6	2	5
years											
old											
• 30-34	350	-	-	8	42	109	97	41	15	4	34
years											
old											
		-	-	-	-	13	39	33	16	2	11
years											
old											
• 40-44	20		-	-		1	1	7	8	1	2

years old										
• 45-49 years old	-	-	-	-	-	-	-	-	-	-

2.2.3. *Born live depending on the rank of the new born baby and on the mother's age group, on environments*

Rank of the new born baby	Total	Mother's age group							
		Born live	Sub 15 years old	15-19 years old	20-24 years old	25-29 years old	30-34 years old	35-39 years old	40-44 years old
A	1	2	3	4	5	6	7	8	9
2002									
TOTAL	6447	37	1182	2301	1786	869	220	50	2
• the first	3330	34	921	1234	803	261	69	8	-
• the second	1957	3	228	750	594	324	50	8	-
• the third	637	-	30	233	205	125	34	10	-
• the fourth	274	-	3	68	114	60	22	7	-
• the fifth	111	-	-	14	41	39	12	4	1
• the sixth	49	-	-	2	18	19	7	3	-
• the seventh	43	-	-	-	8	21	11	3	-
• the eighth	46	-	-	-	3	20	15	7	1

and more									
URBAN	2957	8	321	973	963	529	133	29	1
• the first	1812	7	265	663	600	212	59	6	-
• the second	785	1	49	216	257	220	37	5	-
• the third	189	-	6	68	51	45	12	7	-
• the fourth	86	-	1	19	33	20	8	5	-
• the fifth	35	-	-	5	15	9	3	2	1
• the sixth	16	-	-	2	4	6	3	1	-
• the seventh	17	-	-	-	3	6	7	1	-
• the eighth and more	17	-	-	-	-	11	4	2	-
RURAL	3490	29	861	132	823	340	87	21	1
				8					
• the first	1518	27	656	571	203	49	10	2	-
• the second	1172	2	179	534	337	104	13	3	-
• the third	448	-	24	165	154	80	22	3	-
• the fourth	188	-	2	49	81	40	14	2	-
• the fifth	76	-	-	9	26	30	9	2	-
• the sixth	33	-	-	-	14	13	4	2	-
• the seventh	26	-	-	-	5	15	4	2	-
• the eighth and more	29	-	-	-	3	9	11	5	1

2003									
TOTAL	6510	27	114	218	189	894	314	49	3
			9	1	3				
• the first	3390	27	864	119	918	296	84	9	1
				1					
• the second	1917	-	257	687	568	306	89	10	-
• the third	622	-	21	206	224	118	46	6	1
• the fourth	306	-	7	84	107	73	31	4	-
• the fifth	118	-	-	12	46	37	18	4	1
• the sixth	73	-	-	1	16	35	17	4	-
• the seventh	37	-	-	-	10	18	6	3	-
• the eighth and more	47	-	-	-	4	11	23	9	-
URBAN	3176	10	344	928	111	544	200	29	3
					8				
• the first	1979	10	270	638	732	251	69	8	1
• the second	815	-	70	194	266	207	71	7	-
• the third	194	-	3	58	71	36	23	2	1
• the fourth	103	-	1	33	32	21	12	4	-
• the fifth	40	-	-	5	13	10	8	3	1
• the sixth	21	-	-	-	2	13	5	1	-
• the seventh	7	-	-	-	2	3	2	-	-
• the eighth and more	17	-	-	-	-	3	10	4	-

RURAL	3334	17	805	125 3	775	350	114	20	-
									-
• the first	1411	17	594	553	186	45	15	1	-
• the second	1102	-	187	493	302	99	18	3	-
• the third	428	-	18	148	153	82	23	4	-
• the fourth	203	-	6	51	75	52	19	-	-
• the fifth	78	-	-	7	33	27	10	1	-
• the sixth	52	-	-	1	14	22	12	3	-
• the seventh	30	-	-	-	8	15	4	3	-
• the eighth and more	30	-	-	-	4	8	13	5	-

2.2.4. Fertility rates ¹⁾, on age groups and environments

	2002			2003		
Age group	Total	Urban	Rural	Total	Urban	Rural
A	1	2	3	4	5	6
TOTAL (15 - 49 years old)	36,0	26,8	50,7	36,4	28,8	48,8
• 15-19 years old	47,5	21,5	86,1	45,3	22,9	78,0
• 20-24 years old	85,4	59,3	125,9	83,2	57,2	125,3
• 25-29 years old	66,4	63,7	69,8	69,9	71,9	67,1
• 30-34 years old	28,8	28,7	29,0	33,1	34,2	31,4
• 35-39 years old	11,2	10,4	12,8	13,2	12,9	13,7
• 40-44 years old	2,1	1,8	2,7	2,2	1,9	2,7
• 45-49 years old	0,1	0,1	0,1	0,1	0,2	-

¹⁾Born live at 1,000 women

2.2.5. Deceased following the age group on gender and environments

Age group	2002			2003		
- years old -	Total	Male	Female	Total	Male	Female
A	1	2	3	4	5	6
TOTAL	10730	5563	5167	10415	5480	4935
• 0 - 4 years old	142	82	60	143	83	60
• 5 - 9 years old	15	8	7	12	9	3
• 10-14 years old	26	16	10	21	14	7
• 15-19 years old	29	22	7	20	13	7
• 20-24 years old	41	29	12	34	24	10
• 25-29 years old	52	32	20	52	36	16
• 30-34 years old	76	51	25	70	50	20
• 35-39 years old	92	67	25	106	73	33
• 40-44 years old	187	140	47	168	122	46
• 45-49 years old	331	229	102	317	220	97
• 50-54 years old	466	312	154	433	284	149
• 55-59 years old	497	329	168	551	357	194
• 60-64 years old	864	536	328	742	487	255
• 65-69 years old	1346	816	530	1312	828	484
• 70-74 years old	1617	891	726	1582	855	727
• 75-79 years old	2080	961	1119	2073	1031	1042
• 80-84 years old	1275	493	782	1479	550	929
• 85 years old and over 85 y.o.	1594	549	1045	1300	444	856
URBAN	3418	1824	1594	3339	1841	1498

• 0 - 4 years old	56	32	24	51	31	20
• 5 - 9 years old	3	3	-	7	5	2
• 10-14 years old	8	5	3	12	8	4
• 15-19 years old	14	11	3	9	5	4
• 20-24 years old	23	15	8	19	15	4
• 25-29 years old	21	11	10	28	17	11
• 30-34 years old	26	19	7	26	16	10
• 35-39 years old	34	25	9	47	31	16
• 40-44 years old	94	70	24	76	48	28
• 45-49 years old	164	102	62	164	110	54
• 50-54 years old	233	151	82	217	140	77
• 55-59 years old	197	125	72	227	142	85
• 60-64 years old	334	207	127	264	180	84
• 65-69 years old	426	253	173	424	277	147
• 70-74 years old	500	271	229	471	273	198
• 75-79 years old	556	261	295	567	283	284
• 80-84 years old	315	117	198	386	139	247
• 85 years old and over 85 y.o.	414	146	268	344	121	223
RURAL	7312	3739	3573	7076	3639	3437
• 0 - 4 years old	86	50	36	92	52	40
• 5 - 9 years old	12	5	7	5	4	1
• 10-14 years old	18	11	7	9	6	3
• 15-19 years old	15	11	4	11	8	3
• 20-24 years old	18	14	4	15	9	6
• 25-29 years old	31	21	10	24	19	5

• 30-34 years old	50	32	18	44	34	10
• 35-39 years old	58	42	16	59	42	17
• 40-44 years old	93	70	23	92	74	18
• 45-49 years old	167	127	40	153	110	43
• 50-54 years old	233	161	72	216	144	72
• 55-59 years old	300	204	96	324	215	109
• 60-64 years old	530	329	201	478	307	171
• 65-69 years old	920	563	357	888	551	337
• 70-74 years old	1117	620	497	1111	582	529
• 75-79 years old	1524	700	824	1506	748	758
• 80-84 years old	960	376	584	1093	411	682
• 85 years old and over 85 y.o.	1180	403	777	956	323	633

2.2.6. Deceased on principal death causes

Cause of the demise	2002			2003		
	Total	Male	Female	Total	Male	Female
A	1	2	3	4	5	6
TOTAL	10730	5563	5167	10415	5480	4935
• Infectious and parasitary diseases	111	88	23	97	74	23
of which: tuberculosis	91	76	15	85	67	18
• Tumors	1309	765	544	1290	765	525
• Endocrine, nutritional and metabolic diseases, blood diseases and diseases de						

of the hematopoietic organs	21	11	10	18	12	6
• Mental disorders, diseases of the nervous system and sense organs						
(without cerebrovascular diseases)	36	28	8	51	44	7
• Diseases of the circulatory apparatus	7621	3625	3996	7429	3607	3822
of which: cerebrovascular diseases	3181	1475	1706	3191	1498	1693
• Diseases of the respiratory apparatus	524	315	209	464	272	192
• Diseases of the digestive apparatus	473	303	170	450	280	170
• Diseases of the genitourinary apparatus	73	41	32	84	54	30
• Nervous system	44	35	9	37	26	11
• Complications of pregnancy, labor or confinement	3	-	3	6	-	6
• Congenital anomalies	31	17	14	33	20	13
• Causes of perinatal death	23	16	7	23	15	8
• Accidents, poisonings and traumatism	446	314	132	415	298	117
• Other causes	15	5	10	18	13	5
URBAN	3418	1824	1594	3339	1841	1498
• Infectious and parasitary diseases	40	30	10	38	28	10
of which: tuberculosis	34	27	7	35	26	9
• Tumors	619	348	271	603	353	250
• Endocrine, nutritional and metabolic diseases, blood						

diseases and diseases de						
of the hematopoietic organs	9	5	4	12	9	3
• Mental disorders, diseases of the nervous system and sense organs						
(without cerebrovascular diseases)	10	9	1	41	35	6
• Diseases of the circulatory apparatus	2122	1034	1088	2096	1059	1037
of which: cerebrovascular diseases	989	459	530	968	466	502
• Diseases of the respiratory apparatus	128	81	47	97	57	40
• Diseases of the digestive apparatus	220	141	79	211	132	79
• Diseases of the genitourinary apparatus	35	19	16	39	28	11
• Nervous system	23	17	6	19	12	7
• Complications of pregnancy, labor or confinement	-	-	-	3	-	3
• Congenital anomalies	13	6	7	12	10	2
• Causes of perinatal death	12	8	4	13	8	5
• Accidents, poisonings and traumatism	179	122	57	174	128	46
• Other causes	8	4	4	12	8	4
RURAL	7312	3739	3573	7076	3639	3437
• Infectious and parasitary diseases	71	58	13	59	46	13
of which: tuberculosis	57	49	8	50	41	9
• Tumors	690	417	273	687	412	275

• Endocrine, nutritional and metabolic diseases, blood diseases and diseases de						
of the hematopoietic organs	12	6	6	6	3	3
• Mental disorders, diseases of the nervous system and sense organs						
(without cerebrovascular diseases)	26	19	7	41	35	6
• Diseases of the circulatory apparatus	5499	2591	2908	5333	2548	2785
of which: cerebrovascular diseases	2192	1016	1176	2223	1032	1191
• Diseases of the respiratory apparatus	396	234	162	367	215	152
• Diseases of the digestive apparatus	253	162	91	239	148	91
• Diseases of the genitourinary apparatus	38	22	16	45	26	19
• Nervous system	21	18	3	18	14	4
• Complications of pregnancy, labor or confinement	3	-	3	3	-	3
• Congenital anomalies	18	11	7	11	5	6
• Causes of perinatal death	11	8	3	20	12	8
• Accidents, poisonings and traumatism	267	192	75	241	170	71
• Other causes	7	1	6	6	5	1

2.2.7. Deceased under 1 year old following the age group, on gender and environments

- persons -						
Age group	2002			2003		
	Total	Male	Female	Total	Male	Female
A	1	2	3	4	5	6
TOTAL	122	70	52	118	67	51
• Less than 7 days old	30	20	10	23	14	9
• 7 - 13 days old	7	3	4	10	6	4
• 14 - 29 days old	9	6	3	10	7	3
• 1 month	25	15	10	20	11	9
• 2 months	13	8	5	15	11	4
• 3 - 4 months	15	7	8	18	8	10
• 5 - 6 months	12	5	7	7	4	3
• 7 - 8 months	8	5	3	4	2	2
• 9 - 11 months	3	1	2	11	4	7
URBAN	48	27	21	42	26	16
• Less than 7 days old	15	10	5	11	9	2
• 7 - 13 days old	2	-	2	6	3	3

• 14 - 29 days old	3	2	1	1	1	-
• 1 month	10	6	4	5	2	3
• 2 months	3	2	1	7	5	2
• 3 - 4 months	9	4	5	5	2	3
• 5 - 6 months	5	2	3	2	1	1
• 7 - 8 months	-	-	-	2	1	1
• 9 - 11 months	1	1	-	3	2	1
RURAL	74	43	31	76	41	35
• Less than 7 days old	15	10	5	12	5	7
• 7 - 13 days old	5	3	2	4	3	1
• 14 - 29 days old	6	4	2	9	6	3
• 1 month	15	9	6	15	9	6
• 2 months	10	6	4	8	6	2
• 3 - 4 months	6	3	3	13	6	7
• 5 - 6 months	7	3	4	5	3	2
• 7 - 8 months	8	5	3	2	1	1
• 9 - 11 months	2	-	2	8	2	6

2.2.8. Mortality rates¹⁾ on age groups, gender and environments

Age group	2002			2003		
	Total	Male	Female	Total	Male	Female
- years old -	1	2	3	4	5	6
A						
TOTAL	14,7	15,6	13,8	14,4	15,5	13,3

• 0 - 4 years old	4,1	4,5	3,5	4,2	4,8	3,6
• 5 - 9 years old	0,4	0,4	0,4	0,3	0,5	0,2
• 10-14 years old	0,5	0,6	0,4	0,5	0,6	0,3
• 15-19 years old	0,6	0,8	0,3	0,4	0,5	0,3
• 20-24 years old	0,8	1,1	0,4	0,6	0,9	0,4
• 25-29 years old	1,0	1,2	0,7	0,9	1,3	0,6
• 30-34 years old	1,2	1,6	0,8	1,3	1,8	0,7
• 35-39 years old	2,3	3,4	1,3	2,2	3,0	1,4
• 40-44 years old	3,9	5,8	2,0	3,7	5,4	2,1
• 45-49 years old	6,4	8,8	3,9	6,1	8,4	3,7
• 50-54 years old	9,5	13,1	6,1	8,8	11,9	5,9
• 55-59 years old	12,9	17,9	8,3	13,5	18,3	9,0
• 60-64 years old	20,3	27,5	14,3	19,0	27,3	12,0
• 65-69 years old	31,2	42,2	22,3	30,1	42,3	20,1
• 70-74 years old	47,3	60,2	30,5	46,7	58,7	37,7
• 80-84 years old	1275	493	782	1479	550	929
• 85 years old and over 85 y.o.	1594	549	1045	1300	444	856
URBAN	3418	1824	1594	3339	1841	1498
• 0 - 4 years old	56	32	24	51	31	20
• 5 - 9 years old	3	3	-	7	5	2
• 10-14 years old	8	5	3	12	8	4
• 15-19 years old	14	11	3	9	5	4
• 20-24 years old	23	15	8	19	15	4
• 25-29 years old	21	11	10	28	17	11
• 30-34 years old	26	19	7	26	16	10
• 35-39 years old	34	25	9	47	31	16

• 40-44 years old	94	70	24	76	48	28
• 45-49 years old	164	102	62	164	110	54
• 50-54 years old	233	151	82	217	140	77
• 55-59 years old	197	125	72	227	142	85
• 60-64 years old	334	207	127	264	180	84
• 65-69 years old	426	253	173	424	277	147
• 70-74 years old	500	271	229	471	273	198
• 75-79 years old	556	261	295	567	283	284
• 80-84 years old	315	117	198	386	139	247
• 85 years old and over 85 y.o.	414	146	268	344	121	223
RURAL	7312	3739	3573	7076	3639	3437
• 0 - 4 years old	86	50	36	92	52	40
• 5 - 9 years old	12	5	7	5	4	1
• 10-14 years old	18	11	7	9	6	3
• 15-19 years old	15	11	4	11	8	3
• 20-24 years old	18	14	4	15	9	6
• 25-29 years old	31	21	10	24	19	5
• 30-34 years old	50	32	18	44	34	10
• 35-39 years old	58	42	16	59	42	17
• 40-44 years old	93	70	23	92	74	18
• 45-49 years old	167	127	40	153	110	43
• 50-54 years old	233	161	72	216	144	72
• 55-59 years old	300	204	96	324	215	109
• 60-64 years old	530	329	201	478	307	171
• 65-69 years old	920	563	357	888	551	337
• 70-74 years old	1117	620	497	1111	582	529

• 75-79 years old	1524	700	824	1506	748	758
• 80-84 years old	960	376	584	1093	411	682
• 85 years old and over 85 y.o.	1180	403	777	956	323	633

3. THE WORKFORCE

3.1. General data

Work resources and occupied population at the beginning of the year

	- no of persons (thousands) -					
	Work resources			Occupied population		
	Total	Male	Female	Total	Male	Female
1990	436.3	228.4	207.9	378.3	205.3	173.0
1991	441.7	231.1	210.6	375.4	198.3	177.1
1992	430.1	226.0	204.1	355.2	187.4	167.8
1993	433.7	229.5	204.2	344.0	180.6	163.4
1994	447.3	231.1	216.2	336.2	174.0	162.2
1995	446.1	228.0	218.1	332.3	175.3	157.0
1996	430.9	224.3	206.6	301.7	165.0	136.7
1997	439.5	227.9	211.6	300.2	161.1	139.1
1998	438.2	223.5	214.7	307.4	161.0	146.4
1999	435.3	222.4	212.9	291.3	153.5	137.8
2000	434.8	221.1	213.7	302.6	156.8	145.8
2001	432.2	219.8	212.4	298.8	153.2	145.6
2002	437.8	222.3	215.5	293.9	150.6	143.3
2003	436.8	222.2	214.6	276.0	144.4	131.6
2004	434.3	220.3	214.0	270.6	142.4	128.2

Activity rate and occupation rate at the beginning of the year

-%-						
Activity rate			Occupation rate			
	Total	Male	Female	Total	Male	Female
1990	45.9	51.1	40.8	86.7	89.9	83.2
1991	46.6	50.6	42.7	85.0	85.8	84.1
1992	48.9	51.8	46.0	82.6	82.9	82.2
1993	50.8	52.8	48.9	79.3	78.7	80.0
1994	51.9	53.4	50.5	75.2	75.3	75.0
1995	51.3	54.1	48.7	74.5	76.9	72.0
1996	45.9	51.0	41.0	70.0	73.6	66.2
1997	43.2	47.4	39.3	68.3	70.7	65.7
1998	44.2	47.5	41.2	70.2	72.0	68.2
1999	42.8	46.3	39.5	66.9	69.0	64.7
2000	46.1	49.3	43.0	69.6	70.9	68.2
2001	45.8	48.9	43.1	69.1	69.7	68.5
2002	44.6	47.5	41.8	67.1	67.7	66.5
2003	40.7	43.9	37.6	63.2	65.0	61.3
2004	40.9	44.3	37.5	62.2	64.6	59.9

In the period 1990-2002 the work resources was subject to an oscillating evolution. At the beginning of 2002 being of 437.8 thousand persons with 1.5 thousand persons more than in 1990.

The population activity rate (the ratio between the civil active population and the total population) decreased from 45.9% in 1990 to 44.6% in 2002. with gender disparities: 47.5% for men and 41.8% for women.

The Dolj occupied population has decreased between 1990-2002. Thus the number of occupied persons was of 293.9 thousand persons in 2002 (of

which 143.3 thousand persons were female) – that is with 84.4 thousand persons less than in 1990 (-22.3%).

The occupation rate (the proportion between the civil occupied population and the total work resources) decreased from 86.7% in 1990 to 67.1% in 2002. In 2002 the feminine occupation rate (66.5%) is significantly lower than the masculine occupation rate (67.7%).

Medium number of employees

- persons -						
Year	Medium number of employees					
	Total	of which:				
		Industry	Constr uctions	Agriculture	Education	Health
A	1	2	3	4	5	6
1990	246443	105012	18415	30654	13215	8948
1991	227632	95317	16806	27885	15282	9610
1992	203664	79743	16255	26233	14778	9412
1993	188915	70198	14409	23706	14271	9494
1994	176660	67541	18716	18699	12911	9820
1995	160055	58632	12090	18381	13156	9411
1996	153834	61403	11435	14909	13129	9456
1997	157341	61043	12929	11093	13300	8817
1998	143703	54817	10034	10409	13292	8165
1999	145818	50977	10693	7343	14506	9140
2000	130452	48415	8526	4335	14377	9815
2001	127373	44129	8160	5838	14100	9514
2002	125546	45970	7855	4815	13382	9938

Employing persons as an element of human development is one of the most delicate components of the transition period. During the last decade, the labour

market become more restricted and people experienced for the first time uncertainty and insecurity regarding the employment perspectives.

Between 1990-2002, the medium number of employed people in the Dof county decreased reaching in 2002 a number of 125546 persons (with 120897 persons less than in 1990).

On national economic branches, the worst decrease in the medium number of employees as compared to 1990 was registered in industry (-59042 persons), in agriculture (-25839 persons) and in constructions (-10560 persons). Increases in the medium number of employees in the same period were registered in education (+133 persons), health and social assistance (+990 persons).

The ratio of the medium number of employees on activity branches reflects modifications in 2002 as compared to 1990. Thus in industry the ratio is 36.6%(42.6% in the year 1990), in health and social assistance 7.9% (3.6% in 1990), in constructions 6.3% (7.5% in 1990), and in agriculture and connected services 3.8% (12.4% in 1990).

Number of registered unemployed people and unemployment rate

	Number of unemployed people		Unemployment rate	
	Total	Female	Total	Female
A	1	2	3	4
1991	16689	10606	4.6	5.9
1992	41731	25872	11.2	14.5
1993	57421	33323	14.6	17.1
1994	55670	30999	14.3	16.5
1995	43489	20698	12.6	13.1
1996	23840	11434	7.4	7.6
1997	23555	11076	7.1	7.3
1998	27822	12819	8.7	8.5
1999	40215	17999	11.7	11.0

2000	41965	18436	12.2	11.3
2001	36921	15741	10.8	9.6
2002	20934	9205	6.3	5.8
2003	23580	10245	7.9	7.4
10 months 2004	15505	6366	5.3	4.6

The economic involutions together with a long prevalence of passive-reactive market policy generated the the explosion and chronicization of unemployment and the instalment of unemployment on a long term together with the fragmentation of the labour amrket.

Till 1993, the number of unemployed people and the unemployment rate increased (in 1993 the highest unemployment rate was registered 14.%-total and 17.1% -women); in the period 1994-1997 the evolution is descendent, while beginning with 1998 the evolution is again ascendant as a result of the acceleration in the restructuring of sectors such as mining, chemistry, petrochemistry and due to the new legislation regarding the compensatory payments. The reduction of the unemployment rate in the last period is due to the adoption of proactive measures which aim to move the focus from the passive protection sphere to the active protection sphere.

In 2002 the number of unemployed people was of 20,934 persons. It increased with 25.4% as compared to 1990, and the unemployment rate calculated in relation with the civil active population is of 6.3% (4.6% in 1990).

Beginning with 1990 women have been the most disfavoured persons on the labour market. The women's unemployment rate being systematically superior the men's unemployment rate.

The proportion of women in the total number of unemployed people was superior to the of men's till 1994, after which it decreased reching in 2002 43.9% (63.5% in 1990).

Medium number of employees and pensioners

Year	- persons -					
	Medium number of employees	Medium number of pensioners			Pensioners total / employees	State pensioners / employees
		Total	Of which:			
	Total		State	Agriculture		
A	1	2	3	4	5	6
1990	246443	128904	64383	59359	0.5	0.3
1991	227632	144221	78699	60556	0.6	0.3
1992	203664	149808	85424	59513	0.7	0.4
1993	188915	160918	90877	65393	0.9	0.5
1994	176660	187042	96974	85721	1.1	0.5
1995	160055	197111	102807	90266	1.2	0.6
1996	163834	203382	108339	91344	1.2	0.7
1997	157341	210619	113907	93313	1.3	0.7
1998	143703	217368	119021	95285	1.5	0.8
1999	145818	225550	124614	98207	1.5	0.9
2000	130452	234534	131116	100976	1.8	1.0
2001	127373	243149	138529	102394	1.9	1.1
2002	125832	246170	147003	97126	2.0	1.2

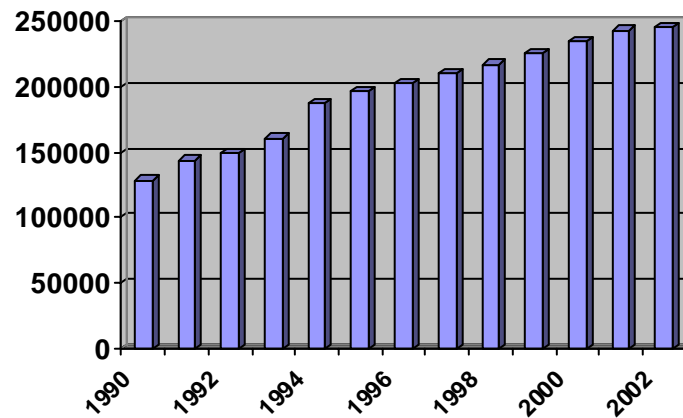
The social-economic structure of the active and inactive population was subject to the direct influence of demographic ageing, as well as to the reduction in the number of workplaces.

The medium number of pensioners evolved ascendingly in the period 1990-2002. Thus in 2002 the medium number of pensioners was of 246,170 persons increasing with 117266 persons (+91.0%) as compared to 1990. The greatest

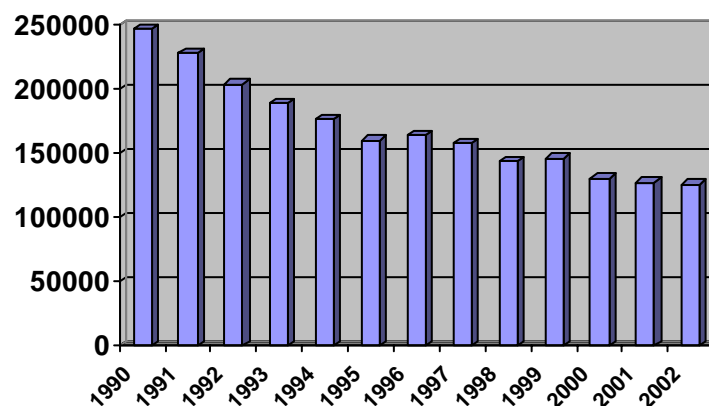
increase by comparison with 1990 was registered in pensioners of social state insurances with 82620 persons (+128.3%).

The absolute number of pensioners in comparison with the number of employees increased; thus in 2002 the number of pensioners from the system of social insurances overpassed in absolute terms that of the employees with 120,338 persons.

In 2002 there was only one employee to two pensioners, while in 1990 the ratio between the medium number of pensioners and the medium number of employed people was of 0.5.



The dynamic of pensioners' number between 1990-2002



The dynamic of employees' number between 1990-2002

3.2. The workforce balance (at the end of the year)

- persons (in thousands) -						
Branch	2002			2003		
	Total	Male	Female	Total	Male	Female
A	1	2	3	4	5	6
A. WORK RESOURCES	436.8	222.2	214.6	434.3	220.3	214.0
•Population on working age	435.7	227.5	208.2	438.0	228.7	209.3
•Pensioners of working age who do not work	6.4	3.6	2.8	9.0	5.1	3.9
•Persons of working age with permanent work incapacity	27.1	15.4	11.7	28.2	16.1	12.1
Employees under or over the working age	1.4	0.7	0.7	1.4	0.7	0.7
•Other persons under or over the working age still working	33.6	13.0	20.6	33.1	12.6	20.5
•Intercounty movement balance (±)	-0.4	0.0	-0.4	-1.0	-0.5	-0.5
B. CIVIL OCCUPIED POPULATION	276.0	144.4	131.6	270.6	142.4	128.2
•Agriculture, hunting, forestry	133.7	63.2	70.5	128.7	61.8	66.9
•Fishing, fish breeding and connected services	0.1	-	0.1	0.1	0.1	-
•Industry	49.9	30.8	19.1	48.0	29.3	18.7
◆ extractive industry	1.9	1.5	0.4	1.9	1.5	0.4

◆ processing industry	41.3	24.2	17.1	40.9	23.9	17.0
◆ electric and thermic power energy, gas and hot water	6.7	5.1	1.6	5.2	3.9	1.3
• Constructions	10.6	9.1	1.5	10.2	8.4	1.8
• Commerce, repairing and maintenance of autovehicles and of personal and household goods	28.0	16.3	11.7	28.7	16.8	11.9
• Hotels and restaurants	2.2	1.0	1.2	2.8	1.4	1.4
• Transport, depositing and communications	10.4	7.6	2.8	10.1	7.1	3.0
• Financial, banking and insurance activities	1.7	0.6	1.1	1.7	0.6	1.1
• Real estate transactions, rentals and services for enterprises	6.1	4.1	2.0	6.8	3.8	3.0
• Public administration	4.3	2.2	2.1	4.3	2.2	2.1
• Education	14.2	5.5	8.7	13.8	5.0	8.8
• Health and social assistance	11.3	2.4	8.9	11.6	3.7	11.5
• Other social, personal or collective service activities	2.4	0.8	1.6	3.8	2.2	1.6
C. UNEMPLOYED PEOPLE	20.9	11.7	9.2	23.6	13.2	10.4
D. CIVIL ACTIVE POPULATION (B+C)	296.9	156.1	140.8	294.2	155.6	138.6
E. POPULATION DURING PROFESSIONAL FORMATION AND OTHER POPULATION CATEGORIES OF WORKING AGE (A-D)	139.9	66.1	73.8	140.1	64.7	75.4

3.3. Medium number of employees and workers on forms of property

	- persons -	
Form of property	2002	2003
A	1	2
TOTAL EMPLOYEES	123546	122096
of which :		
• State property	18851	18481
• Mixed property	18222	15864
• Private property	48833	49839
• Cooperative property	2657	2232
• Public property	249	346
• Foreign property	4415	4910
• Public property of national and local interest	30319	30424
TOTAL WORKERS	71151	68214
of which :		
• State property	14568	13854
• Mixed property	12653	11030
• Private property	34472	34110
• Cooperative property	2130	1918
• Public property	35	64
• Foreign property	3625	3443
• Public property of national and local interest	3668	3795

3.4. Medium number of employees on national economic branches

	- persons	
	-	
Branch	2002	2003
A	1	2
TOTAL (including the private sector)	12354	12209
	6	6
• Agriculture, hunting, forestry	4681	5553
• Fishing, fish breeding and connected services	134	99
• Industry	45970	43525
* extractive industry	1723	1915
* processing industry	37424	36261
* electric and thermic power energy, gas and hot water	6823	5349
• Constructions	7855	7663
• Commerce	19181	19153
• Hotels and restaurants	1208	1666
• Transport, depositing and communications	9237	9116
• Financial, banking and insurance activities	1542	1527
Real estate transactions and other services	3925	3763
• Public administration and defense; compulsory social assistance	4154	4282
• Education	13382	13180
• Health and social assistance	9938	10141
• Other national economic branches	2339	2428

3.5. Medium number of workers on national economic branches

	- persons -	
Branch	2002	2003
A	1	2
	71151	68214
TOTAL (including the private sector)	3277	4074
	110	81
• Agriculture, hunting, forestry	35760	33584
• Fishing, fish breeding and connected services	1360	1499
• Industry	29058	28049
* extractive industry	5342	4036
* processing industry	6157	5565
* electric and thermic power energy, gas and hot water	12008	11534
• Constructions	974	1015
• Commerce	7611	6916
• Hotels and restaurants	127	130
• Transport, depositing and communications	1321	1388
• Financial, banking and insurance activities	576	738
• Real estate transactions and other services	754	759
• Public administration and defense; compulsory social assistance	1086	1268
• Education	1390	1162
• Health and social assistance		
• Other national economic branches		

3.6. Medium number of employees on industrial branches

	- persons -	
Branch	2002	2003
A	1	2
INDUSTRY - TOTAL	45970	43525
EXTRACTIVE INDUSTRY	1723	1915
of which:		
• Extractive industry of power products	1681	1912
• Extractive industry of non-power products	42	3
PROCESSING INDUSTRY	37424	36261
of which:		
• Food industry, beverages and tobacco	4841	4354
• Textile and leather industry	8634	8348
• Leather and shoe industry	1312	1433
• Timber processing industry (only furniture)	658	674
• Cellulose, paper and cardboard industry, publishing industry	649	735
• Chemical industry and synthetic or artificial fiber industry	1931	1625
• plastic processing industry	314	311
• Other non-metallic mineral products	705	772
• Metallurgy	709	681
• Metallic products and constructions	999	2761
• Car industry and car equipment industry	1873	963
• Electrical devices and appliances, precision instruments, optics and watchmaking, office devices	5145	4641
• Industry of the means of public transport	8681	8072

• Other industrial activities	973	891
ELECTRIC AND THERMIC ENERGY, GAS AND WATER		
of which:		
• The production, transport and distribution of electric and thermic energy, gas and water	5325	3952
• Caption, treatment and water distribution	1498	1397

3.7. Medium number of workers on industrial branches

	- persons-	
Branch	2002	2003
A	1	2
INDUSTRY - TOTAL	35760	33584
EXTRACTIVE INDUSTRY	1360	1499
of which:		
• Extractive industry of power products	1325	1497
• Extractive industry of non-power products	35	2
PROCESSING INDUSTRY	29058	28049
of which:		
• Food industry, beverages and tobacco	3237	3074
• Textile and leather industry	7763	7310
• Leather and shoe industry	1178	1305
• Timber processing industry (only furniture)	558	564
• Cellulose, paper and cardboard industry, publishing industry	534	537

• Chemical industry and synthetic or artificial fiber industry	1523	1290
• plastic processing industry	224	238
• Other non-metallic mineral products	508	573
• Metallurgy	590	572
• Metallic products and constructions	809	2129
• Car industry and car equipment industry	1388	737
• Electrical devices and appliances, precision instruments, optics and watchmaking, office devices	3566	3204
• Industry of the means of public transport	6350	5862
• Other industrial activities	830	654
ELECTRIC AND THERMIC ENERGY, GAS AND WATER		
of which:		
• The production, transport and distribution of electric and thermic energy, gas and water	4130	2938
• Caption, treatment and water distribution	1212	1098

3.8. Total employees on national economic branches and on gender on the 31st of december

Branch	- persons			
	2002		2003	
	Total	Of which: women	Total	Of which: women
A	1	2	3	4

TOTAL (including the private sector)	12418 0	54672	12284 8	53485
• Agriculture, hunting, forestry	3829	747	4695	984
• Fishing, fish breeding and connected services	134	25	88	7
• Industry	44998	18433	43230	18037
*extractive industry	1894	374	1907	368
*processing industry	36370	16438	36171	16322
▶ Food industry, beverages and tobacco	4236	1851	4530	2078
▶ Textile and leather industry	8448	7150	8709	7131
▶ Leather and shoe industry	1377	889	1587	1208
▶ Timber processing industry (only furniture)	702	178	660	213
▶ Cellulose, paper and cardboard industry, publishing industry	648	354	743	453
▶ Chemical industry and synthetic or artificial fiber industry	1679	491	1611	458
▶ plastic processing industry	331	74	320	108
▶ Other non-metallic mineral products	390	157	747	210
▶ Metallurgy	704	197	631	196
▶ Metallic products and constructions	1023	231	2711	454
▶ Car industry and car equipment industry	1736	303	907	118
▶ Electric devices and appliances, precision instruments, optics and watchmaking, office devices	5328	1729	4480	1189
▶ Industry of the means of public transport	8725	2553	7686	2323
▶ Other industrial activities	1043	281	849	183
* Electric and thermic energy, gas and water	6734	1621	5152	1347
• Constructions	8571	1144	7877	1325
• Commerce	20493	9019	20874	8966

• Hotels and restaurants	1012	629	1596	858
• Transports, depositing and communications	9233	2786	8781	2941
• Financial, banking and insurance activities	1557	1053	1554	972
• Real estate transactions and other services	3734	1005	3914	1053
• Public administration and defense; compulsory social assistance	4270	2138	4266	2062
• Education	13853	8423	13527	8514
• Health and social assistance	10119	7910	9962	6592
• Other national economic branches	2377	1360	2484	1174

3.9. Total workers on national economic branches and on gender on the 31st of December

Branch	- person s-			
	2002		2003	
	Total	of which: women	Total	of which: women
A	1	2	3	4
TOTAL (including the private sector)	71698	25356	68260	
• Agriculture, hunting, forestry	2161	350	3360	
• Fishing, fish breeding and connected services	110	18	81	
• Industry	35743	14067	33580	
*extractive industry	1514	254	1495	
*processing industry	29476	12735	28173	
▶ Food industry, beverages and tobacco	3129	1331	3467	

▶ Textile and leather industry	7565	6350	7545
▶ Leather and shoe industry	1230	796	1440
▶ Timber processing industry (only furniture)	601	130	570
▶ Cellulose, paper and cardboard industry, publishing industry	512	288	572
▶ Chemical industry and synthetic or artificial fiber industry	1297	341	1284
▶ plastic processing industry	266	39	247
▶ Other non-metallic mineral products	262	70	544
▶ Metallurgy	587	145	515
▶ Metallic products and constructions	821	165	2096
▶ Car industry and car equipment industry	1302	159	697
▶ Electric devices and appliances, precision instruments, optics and watchmaking, office devices	3648	984	3048
▶ Industry of the means of public transport	4022	1144	5545
▶ Other industrial activities	633	163	603
* Electric and thermic energy, gas and water	4753	1078	3912
• Constructions	6812	587	5708
• Commerce	12963	5596	12383
• Hotels and restaurants	881	569	1012
• Transports, depositing and communications	7508	2152	6713
• Financial, banking and insurance activities	119	62	133
• Real estate transactions and other services	1173	166	1417
• Public administration and defense; compulsory social assistance	628	178	675
• Education	769	234	777
• Health and social assistance	1115	610	1257
• Other national economic branches	1437	739	1164

3.10. Registered unemployed people and unemployment rate on the 31st of December ²⁾

	- persons -	
	2002	2003
A	1	2
TOTAL unemployed people	20934	23580
of which: women	9205	10425
BENEFIT FROM UNEMPLOYMENT AID	7700	13502
of which: women	3668	5794
• Workers	4353	8228
of which: women	1649	2821
• Persons with a highschool and post-secondary instruction level	2466	3896
of which: women	1444	2169
• Persons with a university instruction level	881	1378
of which: women	575	804
OF THE UNEMPLOYMENT AID BENEFICIARIES – PERSONS WHO WORKED	5470	9710
of which: women	2582	4026
• Workers	3533	6656
of which: women	1346	2229
• Persons with a highschool and post-secondary instruction level	1572	2433
of which: women	1003	1456
• Persons with a university instruction level	365	621
of which: women	233	341
OF THE UNEMPLOYMENT AID BENEFICIARIES – BENEFICIARIES OF PROFESSIONAL INTEGRATION AID	2230	3792
of which: women	1086	1768
• Workers	820	1572
of which: women	303	592
• Persons with a highschool and post-secondary instruction level	894	1463
of which: women	441	713
• Persons with a university instruction level	516	757
of which: women	342	463

²⁾ At the workforce offices

BENEFIT FROM SUPPORT ALLOCATION ³⁾	6201	187
of which: women	2764	4
• Workers	5884	184
of which: women	2566	3
• Persons with a highschool and post-secondary instruction level	99	3
of which: women	57	1
• Persons with a university instruction level	218	-
of which: women	141	-
BENEFICIARIES OF COMPENSATORY PAYMENTS ACCORDING TO OUG. 98/1999	260	1
of which: women	74	1
• Workers	160	1
of which: women	32	1
• Persons with a highschool and post-secondary instruction level	57	-
of which: women	23	-
• Persons with a university instruction level	43	-
of which: women	19	-
DO NOT BENEFIT FROM FINANCIAL RIGHTS ⁴⁾	6773	9890
of which: women	2699	4626
• Workers	6589	9673
of which: women	2625	4537
• Persons with a highschool and post-secondary instruction level	69	79
of which: women	30	33
• Persons with a university instruction level	115	138
of which: women	44	56
UNEMPLOYMENT RATE (%)	7.1	8.0
of which: women	6.5	7.5

³⁾ Due to the expiration of the limit of 270 days..

⁴⁾ Do not benefit from the provisions of the Law no 1/1991 since they demand a workplace for the first time
Sursa : Agency of Work and Social Protection

3.11. Work conditions

Number of work accidents and collective conflicts at work

	U/M	2002	2003
		1	2
Number of work accidents, of which:	number	119	100
• Mortal	number	12	15
• Temporary work incapacity	number	107	85
Work accidents rate	%	0.72	0.61